

WGS 84 POSITIONS can be plotted directly on this chart

RIVER HUMBER SKITTER CHANNEL

DEPTHS IN METRES
SCALE 1 : 10000

SURVEYED BY
Harbour Master, Humber
ASSOCIATED BRITISH PORTS
2nd February 2024

Depths are in metres and decimetres reduced to the chart datum given below
Underlined figures are drying heights in metres and decimetres above chart datum

TIDAL LEVELS AND CHART DATUM

PLACE	Heights in metres above Chart Datum				Chart Datum and remarks
	M.H.W.S.	M.H.W.N.	M.L.W.N.	M.L.W.S.	
KING GEORGE DOCK	7.6	6.0	2.5	0.7	3.9m below O.D. Newlyn
ALBERT DOCK	7.6	5.9	2.5	0.7	3.9m - - - - - Being approx. L.A.T.
HUMBER BRIDGE	7.2	5.4	1.9	0.3	3.3m - - - - -

Projection: Transverse Mercator. National Grid references are given along borders of chart

- 1. Light stars without legends represent two fixed lights displayed vertically and are seen as red to port and green to starboard when proceeding upriver.
 - 2. Gas pipelines contain flammable natural gas under high pressure. Any ship damaging the lines would face an immediate fire hazard. Mariners must not anchor in the vicinity of the lines.
- Whilst every care was taken in the preparation of this Chart, which is intended to provide Mariners with the data which, associated with the information on the chart, is intended to provide preparation, ABP gives notice that it is not intended to be used as a substitute for the information on the chart, and that it is not intended to be used as a substitute for the information on the chart, and that it is not intended to be used as a substitute for the information on the chart.

SATELLITE-DERIVED POSITIONS

Positions obtained from satellite navigation systems, such as the Global Positioning System (GPS), are normally referred to the World Geodetic System 1984 Datum. Such positions can be plotted directly on this chart.

NATIONAL HORIZONTAL DATUM

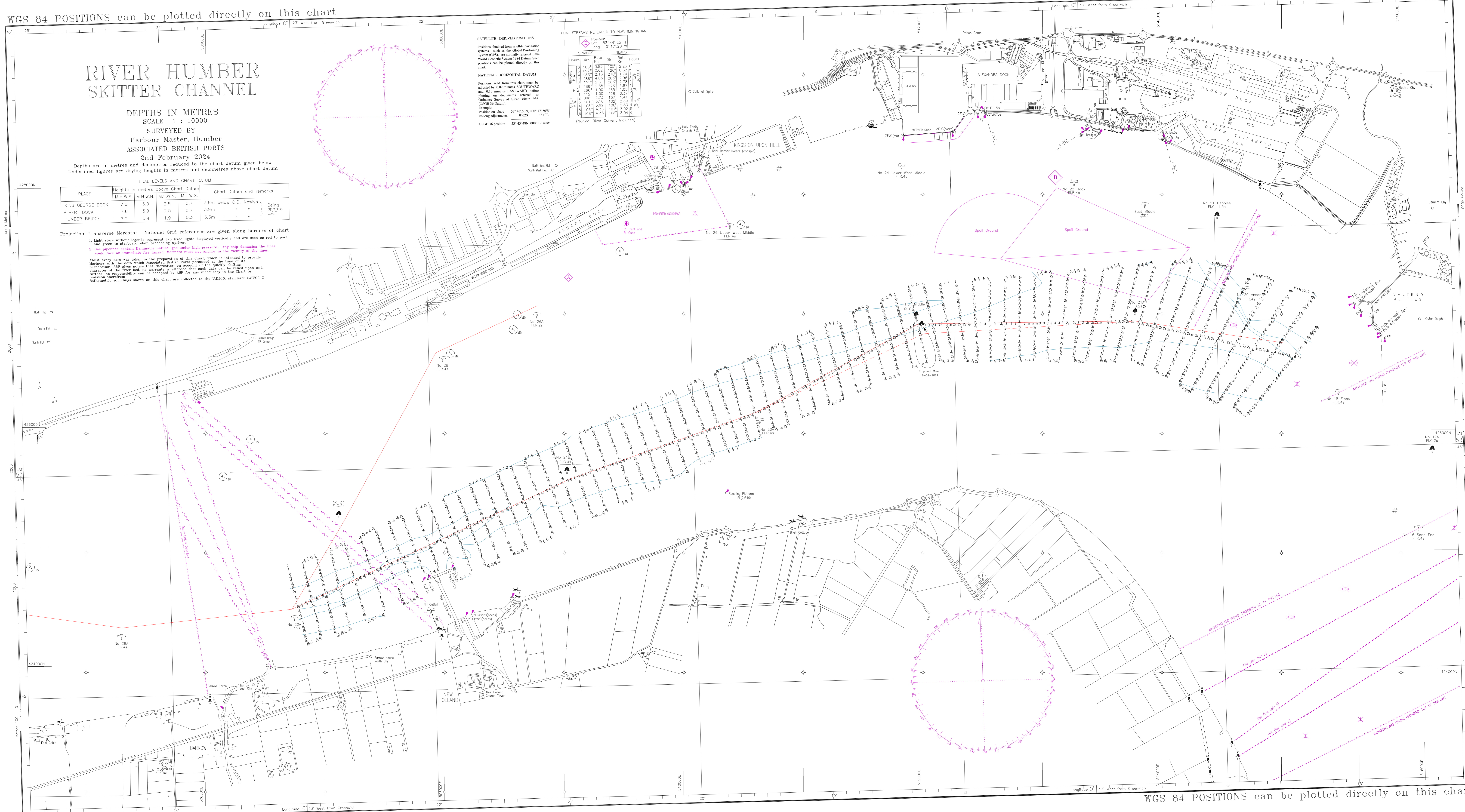
Positions read from this chart must be adjusted by 0.02 minutes SOUTHWARD and 0.10 minutes EASTWARD before plotting in documents referred to Ordnance Survey of Great Britain 1936 (OSGB 36 Datum).

Example:
Position on chart 53° 43' 50N, 000° 17' 20W
is long-plotting 53° 43' 48N, 000° 17' 40W

OSGB 36 position 53° 43' 48N, 000° 17' 40W

SPRINGS		NEAPS	
Hours	Dim	Rate	Dim
1098	3.83	109	2.25
1097	2.62	120	0.62
1096	2.16	278	0.74
1095	4.05	289	2.78
1094	2.61	289	1.87
1093	1.00	269	0.05
1092	1.12	100	2.28
1091	3.16	109	0.89
1090	3.92	108	2.83
1089	4.36	107	3.02
1088	4.38	106	3.04

(Normal River Current Included)



WGS 84 POSITIONS can be plotted directly on this chart